

Dance Flooring Catalog



Robbins 
PERFORMING ARTS™

Robbins' Premier Performing Arts Systems

Robbins most advanced professional sprung floor systems are designed & biomechanically researched, specifically for performers with dancer input to create the world's most comfortable and highest performing surfaces. Robbins unique dance floor designs clearly unites legendary performance with all the qualities necessary to withstand the rigors of even the most demanding venues, delivering long-lasting, superior performance characteristics that traditional sprung floors cannot. Outstanding uniformity, vibration control, impact force reduction, and deflection allow performers of all levels to concentrate on their art, **not** the fear of falling or potential injury.

Why Robbins is Different:

Custom Design Capabilities- Robbins has a full time R&D and Technical Sales staff with over 100 years of combined experience. Robbins can design a sprung floor system to fit your needs. From moisture issues, retrofits, to special applications, Robbins specializes in designing, testing, and manufacturing floor systems customized to fit any facility.

Flooring Manufacturer- The majority of dance floor companies do not manufacture their own hardwood flooring products. Robbins manufactures their hardwood flooring bringing quality right from the source.

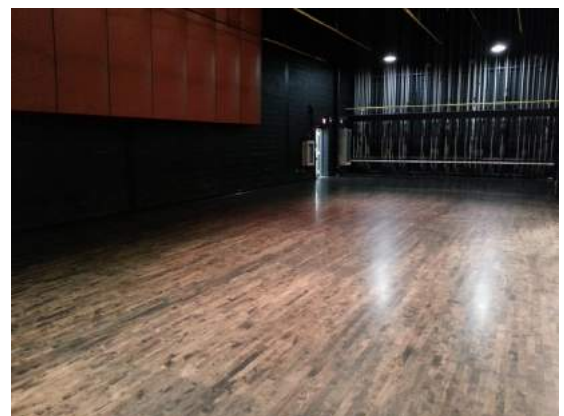
Innovation- Robbins continually leads the way in researching and testing the dynamic interaction between the performer, the activity and the surface. Beneath the surface, you'll find the results of an advanced, engineered floor system designed to promote enhanced comfort and safety for all performance levels.



Characteristics of a Superior Dance Floor System* Includes:

- Significant enhancements to dancer “comfort”.
- Provides unparalleled uniformity in feel and performance
- Tightly controls magnitude and timing of deformation for proper energy return
- Damps vibration, quickly limiting effect on neighboring performers
- **Minimizes** floor system vibration in general and specifically in the natural frequency range of soft tissue packages, providing comfort and reducing fatigue
- **Separates** the input vibration frequency (i.e., the skeletal deceleration (frequency) from the natural frequency of soft tissue packages
- Induces small Electromyography (EMG) muscle activity response
- Limits the amount of flooring set into motion upon impact through excellent deformation control
- Provides outstanding acoustics - control of audible vibration
- Eliminates excessive rebound e.g., “trampoline effect”
- Prevents “hard & soft spots” through uniform suspension across the entire floor
- Uniformity, vibration control, and force reduction working together in unison to dramatically enhance performance, while also increasing comfort and safety.
- Provides excellent stability under theatrical loading.

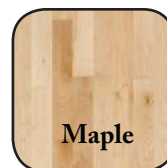
**defined by Dr. Benno Nigg, The Human Performance Lab, University of Calgary*



MFMA Northern Hard Maple

Maple flooring has become an industry standard in performance surfacing due to its resilient nature and attractive appearance. Robbins has a variety of maple flooring surface options to fit every budget, building design, and life cycle desired. All Robbins maple products are milled to meet or exceed strict MFMA grading standards.

Other Species: In addition to *MFMA Northern Hard Maple*, Robbins also produces a variety of other high quality **NORTHERN** wood species as an alternative surface option. Designed to match any style, all of our species are available in a variety of pre-finished colors, unfinished, as well as numerous width and grade options.



Maple



Red Oak



Hickory

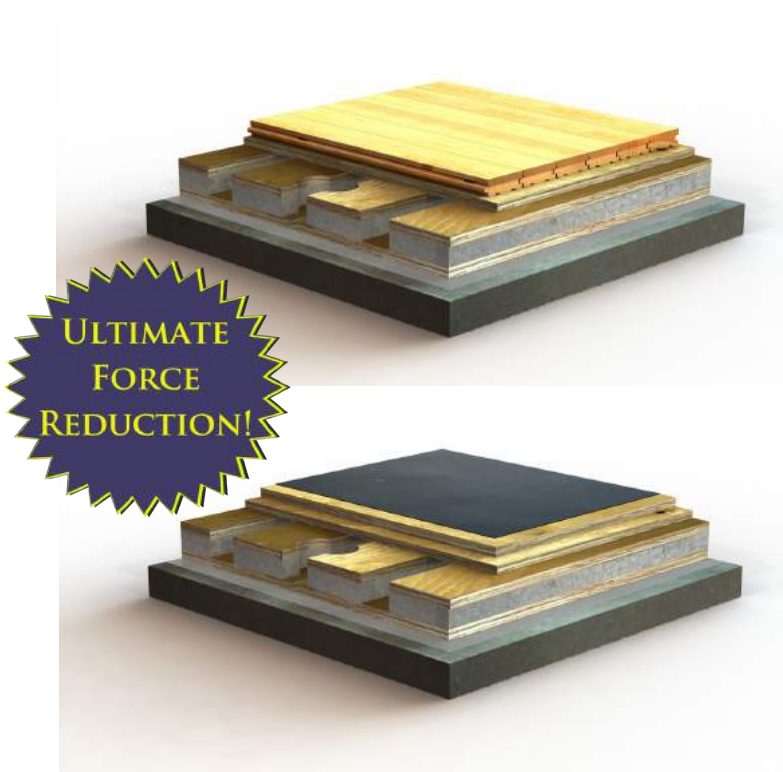


Walnut

Environmental Commitment

Sustainability and being a good neighbor are key components of Robbins Corporate Mission. At Robbins, our mills are an integral part of the community, providing jobs, purchasing local resources and generating sustainable energy. We apply sustainability principles to our manufacturing and business practices. From research and design to procurement, distribution and installation of products and services worldwide, we strive to conserve resources, responsibly use lumber and other raw materials, incorporate recycled materials, and reduce our impact on the environment within the context and conscience of our business.

DanzAire®



FLOOR TYPE:

Sprung Floor: Anchored

FLOOR SURFACE:

Northern Hard Maple Flooring or Marley Vinyl

FLOOR SYSTEM THICKNESS:

Wood: 2 15/16" (75mm)

Vinyl: 2 11/16" (68mm)

Note: System can be easily modified to achieve a different height

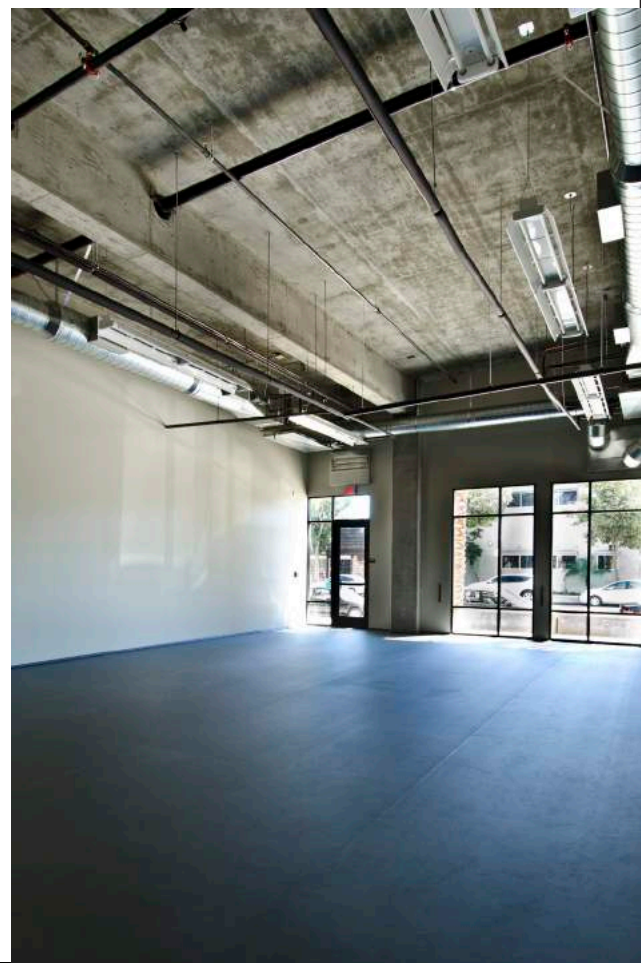
APPLICATIONS:

Ballet, Contemporary, Modern, Classical, Ballroom, Hip Hop, Swing, Jazz, Theatrical, Multi-purpose

FEATURES

- **Durable Hardwood Performance Surface (Wood Surface Only):** *Specially Profiled Solid Hardwood surface that is recoatable & refinishable, and custom designed to increase flexibility and resilience for dancer safety.*
 - **Durable Vinyl Performance Surface (Vinyl Surface Only):** *slip resistant, non-reflective, dimensionally stable vinyl surface.*
 - **Load distribution deflection plate:** *Delivers vitally important foot stability.*
 - **Patented Sprung Subfloor Design:** *A Proprietary design with Specially formulated cushion layer that provides outstanding Uniformity of performance.*
 - *Balanced Shock Absorption & Energy Return for Enhanced performance and longevity.*
 - *Vibration Tuning and Damping - Controls acoustic and sensory vibration.*
 - *Anchor Pattern facilitates uniformity of all performance characteristics.*
- *FSC® Materials Available for Purchase*

DANZAIRE has been tested per the ANSI E1.26 Standard



DanzAire® Batten

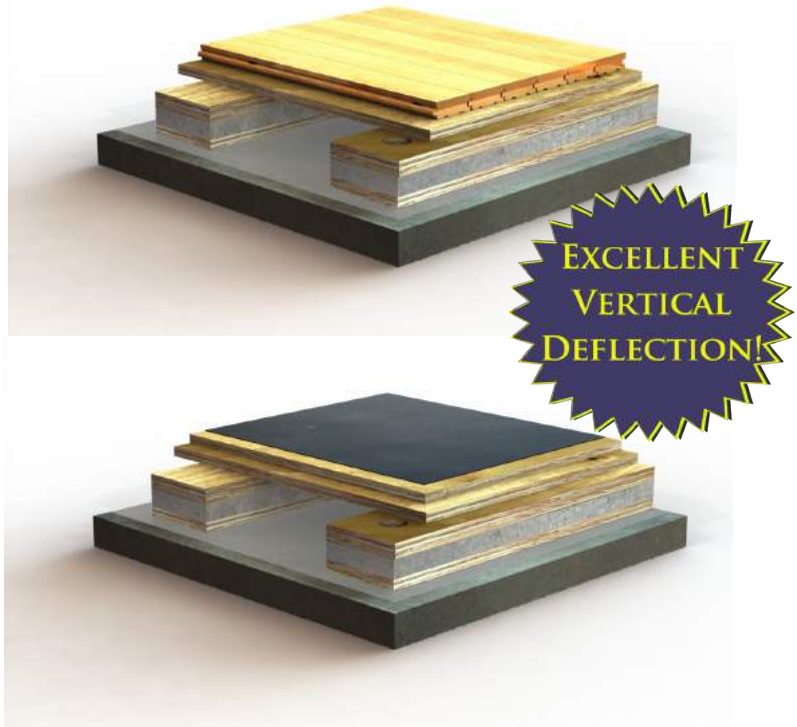
FLOOR TYPE:
Sprung Floor: Anchored

FLOOR SURFACE:
Northern Hard Maple Flooring or
Marley Vinyl

FLOOR SYSTEM THICKNESS:
Wood: 3 5/16" (84mm)
Vinyl: 3 1/16" (78mm)

*Note: System can be easily modified to achieve a
different height*

APPLICATIONS:
Contemporary, Multi-functional,
Hip Hop, Modern, Swing,
Belly Dancing, Classical



FEATURES

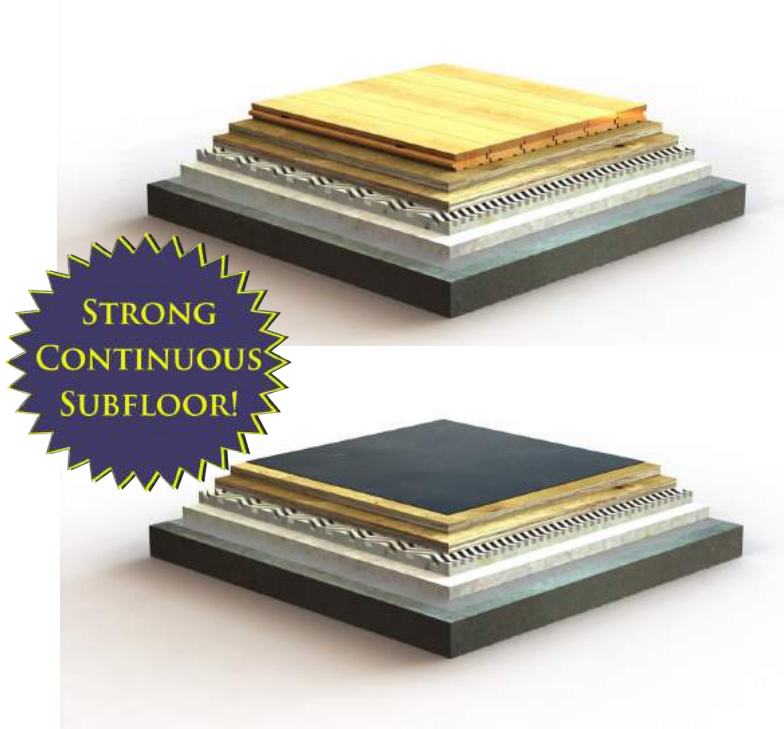
- **Durable Hardwood Performance Surface (Wood Surface Only):** solid hardwood surface that is recoatable and refinishable.
- **Durable Vinyl Performance Surface (Vinyl Surface Only):** slip resistant, non-reflective, dimensionally stable vinyl surface.
- **Comfort & Safety:** thick resilient pad for higher force reduction and deflection to soften landing.
- **Energy Absorption:** anchored resilient laminated battens for maximum vibration damping & uniformity.
- **Semi-Flexible Sheathing Layer:** continuous sheathing layer for load distribution & dimensional stability.
- **Specially Profiled Hardwood (Wood Surface Only):** custom designed to increase flexibility and resilience for dancer safety.
- **Proprietary Laminated Battens:** thick resilient pad encased in a laminated batten for excellent force reduction and deflection.

**FSC® Materials Available for Purchase*

DANZAIRE BATTEN has been tested per the ANSI E1.26 Standard



Le Lena A



FLOOR TYPE:

Sprung Floor: Floating

FLOOR SURFACE:

Northern Hard Maple Flooring or Marley Vinyl

FLOOR SYSTEM THICKNESS:

Wood: 2 1/4" (68mm)

Vinyl: 2" (51mm)

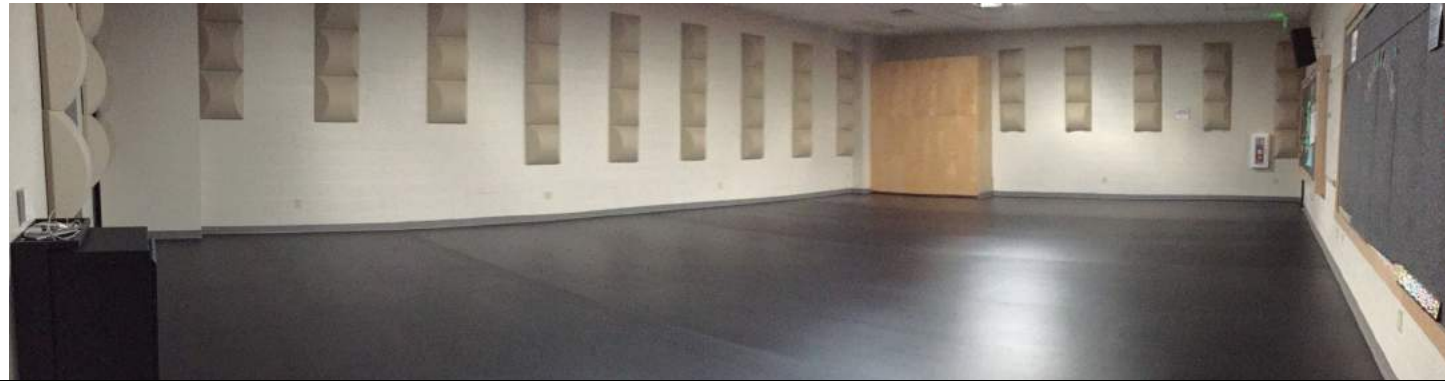
APPLICATIONS:

Classical, Ballet, Multi-Functional, Modern, Contemporary, Hip Hop, Swing, Belly Dancing, Percussive (Tap, Irish, Flamenco)

FEATURES

- **Durable Hardwood Performance Surface (Wood Surface Only):** solid hardwood surface that is recoatable and refinishable.
 - **Durable Vinyl Performance Surface (Vinyl Surface Only):** slip resistant, non-reflective, dimensionally stable vinyl surface.
 - **Comfort & Safety:** thick resilient pad for great force reduction, vibration damping, and deflection to soften landing.
 - **Excellent Acoustics:** continuous resilient subfloor for consistent sound and uniformity.
 - **Specially Profiled Hardwood Flooring (Wood surface only):** custom designed to increase flexibility and resilience for dancer safety.
 - **Uniform Resilience:** continuous subfloor for uniformity and rolling load carrying ability.
- *FSC® Materials Available for Purchase

LE LENA has been tested per the ANSI E1.26 Standard



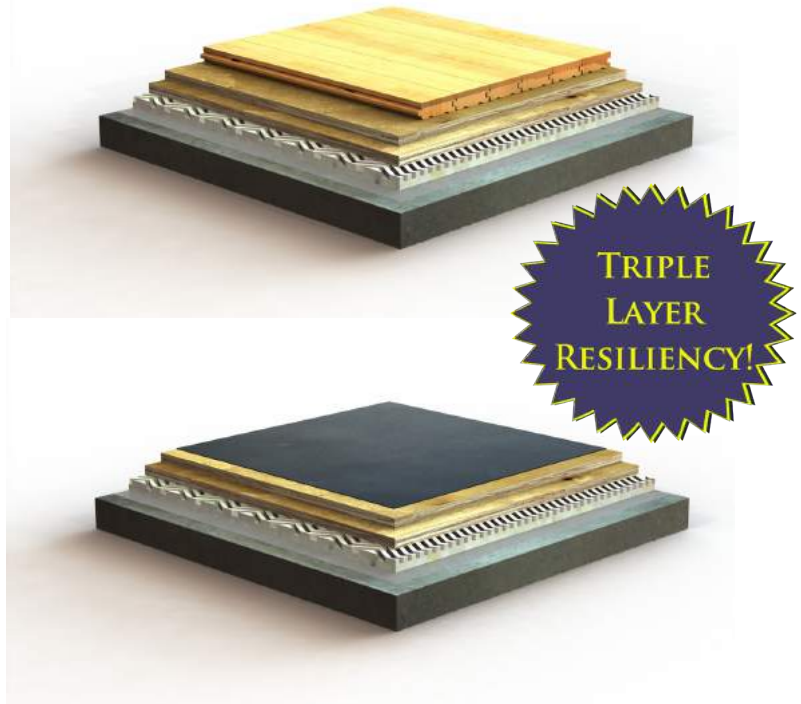
Le Lena B

FLOOR TYPE:
Sprung Floor: Floating

FLOOR SURFACE:
Northern Hard Maple Flooring or
Marley Vinyl

FLOOR SYSTEM THICKNESS:
Wood: 2 ¼" (57mm)
Vinyl: 1 ⅞" (40mm)

APPLICATIONS:
Classical, Ballet, Multi-Functional, Modern,
Contemporary, Hip Hop, Swing, Belly
Dancing, Percussive (Tap, Irish, Flamenco)

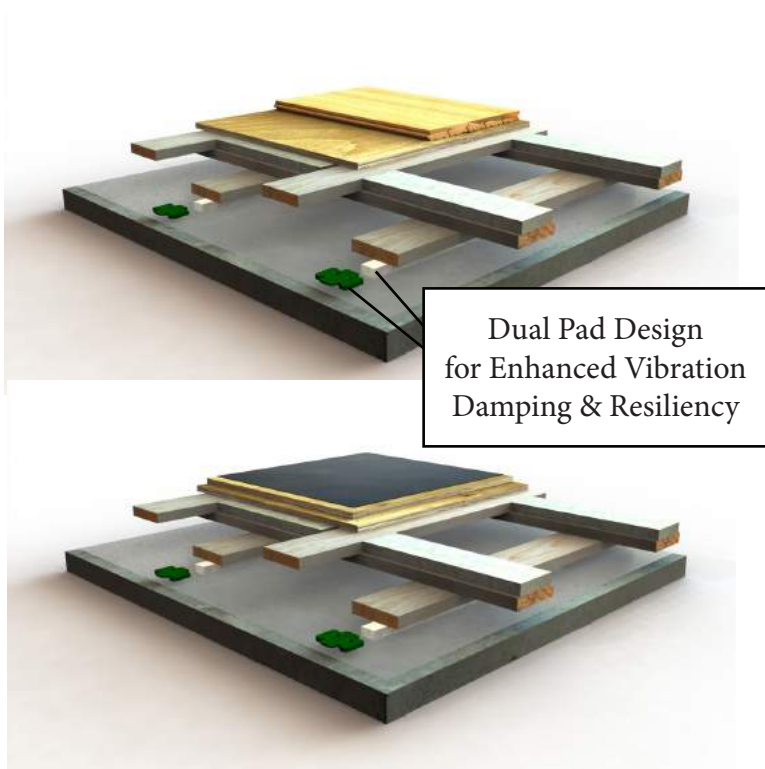


FEATURES

- **Durable Hardwood Performance Surface (Wood Surface Only):** solid hardwood surface that is recoatable and refinishable.
- **Durable Vinyl Performance Surface (Vinyl Surface Only):** slip resistant, non-reflective, dimensionally stable vinyl surface.
- **Comfort & Safety:** thick resilient pad for moderate force reduction, vibration damping, and deflection to soften landing
- **Excellent Acoustics:** continuous resilient subfloor for consistent sound and uniformity
- **Specially Profiled Hardwood Flooring (Wood Surface Only):** custom designed to increase flexibility and resilience for dancer safety
- **Uniform Resilience:** continuous subfloor for uniformity and rolling load carrying ability
*FSC® Materials Available for Purchase

LE LENA has been tested per the ANSI E1.26 Standard

Elan Basketweave



FLOOR TYPE:

Sprung Floor: Floating (*Optional: Anchored*)

FLOOR SURFACE:

Northern Hard Maple Flooring or Marley Vinyl

FLOOR SYSTEM THICKNESS:

Wood: 3 15/16" (100mm)

Vinyl: 3 11/16" (94mm)

Note: System can be easily modified to achieve a different height

APPLICATIONS:

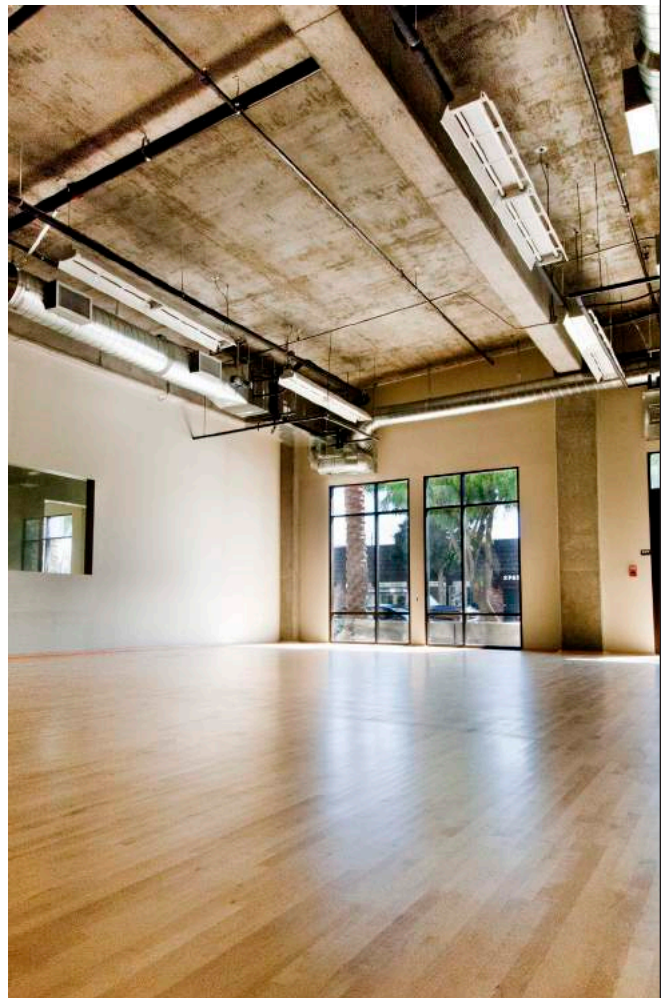
Classical, Percussive (Tap, Irish, Flamenco), Multi-Purpose, Modern, Contemporary, Ballet, Hip Hop, Swing, Belly Dancing

FEATURES

- **Durable Hardwood Performance Surface (*Wood Surface Only*):** solid hardwood surface that is recoatable and refinishable.
- **Durable Vinyl Performance Surface (*Vinyl Surface Only*):** slip resistant, non-reflective, dimensionally stable vinyl surface.
- **Comfort & Safety:** 50 Durometer pads for higher force reduction and deflection to soften landing.
- **Energy Absorption:** dual resilient strips & pads for added vibration damping & shock absorption.
- **Specially Profiled Hardwood Flooring (*Wood Surface Only*):** custom designed to increase flexibility and resilience for dancer safety.
- **Uniform Resilience:** triple layer stringers for uniformity and excellent area elasticity.
- **Optional Design:** optional anchored design for added dimensional stability

**FSC® Materials Available for Purchase*

ELAN BASKETWEAVE has been tested per the ANSI E1.26 Standard





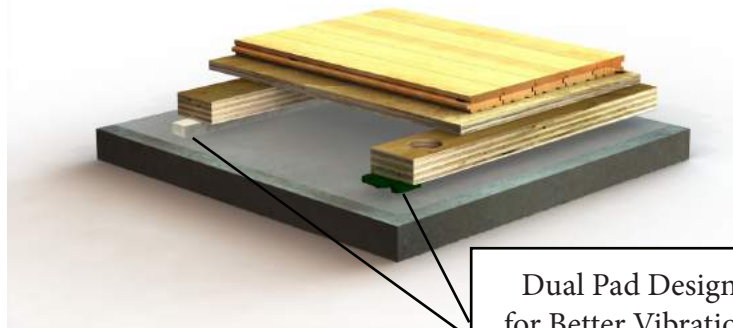
Pro Tap

FLOOR TYPE:
Sprung Floor: Floating (*Optional: Anchored*)

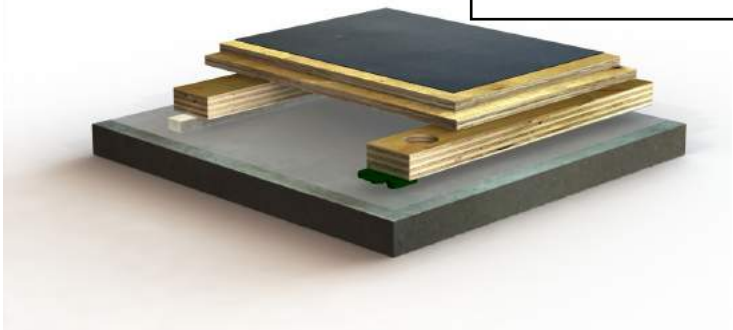
FLOOR SURFACE:
Northern Hard Maple Flooring or
Marley Vinyl

FLOOR SYSTEM THICKNESS:
Wood: 2 3/4" (70mm)
Vinyl: 2 1/2" (64mm)
*Note: System can be easily modified to achieve
a different height*

APPLICATIONS:
Percussive (Tap, Irish, Flamenco),
Multi-purpose



Dual Pad Design
for Better Vibration
Damping & Resiliency

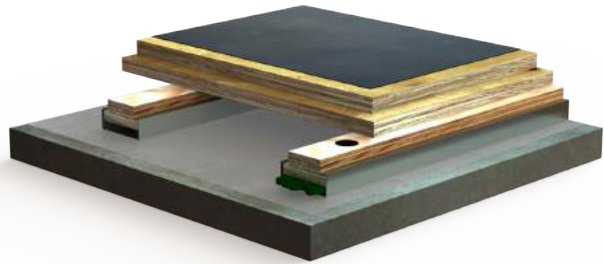
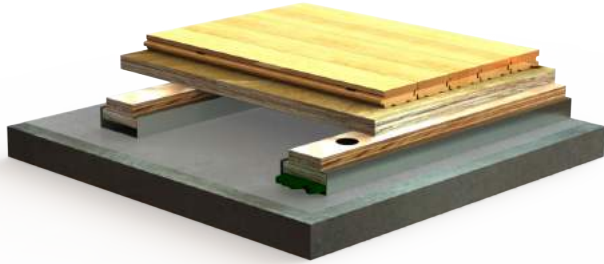


FEATURES

- **Durable Hardwood Performance Surface (*Wood Surface Only*):** solid hardwood surface that is both durable & consistent for tap dancing.
- **Durable Vinyl Performance Surface (*Vinyl Surface Only*):** slip resistant, non-reflective, dimensionally stable vinyl surface.
- **Comfort & Safety:** dual rubber pads and resilient strips for added vibration damping & force reduction to decrease stress on joints.
- **Minimal Dancer Disturbance:** 50 durometer pads for higher force reduction and deflection properties to minimize interruption of other tap dancers.
- **Specially Profiled Hardwood Flooring (*Wood Surface Only*):** custom designed to increase flexibility and resilience for dancer safety.
- **Excellent Acoustics:** engineered plywood sleepers for increased acoustics and tapping uniformity.
**FSC® Materials Available for Purchase*

PRO TAP has been tested per the ANSI E1.26 Standard

Bio-Channel® Classic for Dance



FLOOR TYPE:
Sprung Floor: Anchored

FLOOR SURFACE:
Northern Hard Maple Flooring or
Marley Vinyl

FLOOR SYSTEM THICKNESS:
Wood: 3" (76mm)
Vinyl: 3" (76mm)

Note: System can be easily modified to achieve a different height

APPLICATIONS:
Theatrical Performance Venues, Classical,
Hip-Hop, Multi-Functional, Modern, Belly
Dancing

FEATURES

- **Durable Hardwood Performance Surface (Wood Surface Only):** solid hardwood surface that is recoatable & refinishable.
- **Durable Vinyl Performance Surface (Vinyl Surface Only):** slip resistant, non-reflective, dimensionally stable vinyl surface.
- **Comfort & Safety:** thick resilient pads for higher force reduction and deflection to soften landing.
- **Energy Absorption:** anchored resilient battens for maximum vibration damping & uniformity.
- **Semi-Flexible Sheathing Layer:** continuous sheathing layer for upper load distribution & dimensional stability.
- **Specially Profiled Hardwood:** custom designed to increase flexibility and resilience for dancer safety.

**FSC® Materials Available for Purchase*

BIO CHANNEL CLASSIC FOR DANCE has been tested per the ANSI E1.26 Standard



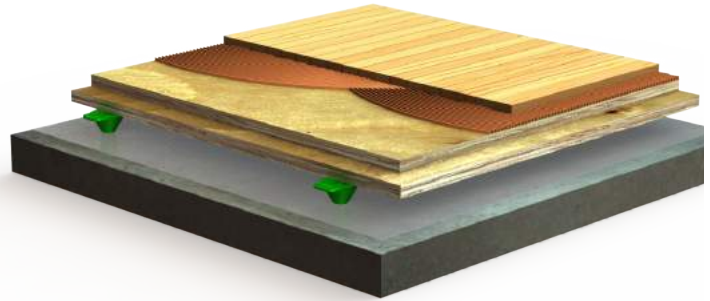
Parquet for Dance

FLOOR TYPE:
Sprung Floor: Floating

FLOOR SURFACE:
Northern Hard Maple Flooring

FLOOR SYSTEM THICKNESS:
1 13/16" (46mm)

APPLICATIONS:
Classical, Ballet, Percussive (Tap, Irish, Flamenco), Multi-Functional, Modern, Contemporary, Hip Hop, Swing, Belly Dancing



FEATURES

- **Durable Hardwood Performance Surface:** *solid hardwood surface that is recoatable and refinishable.*
- **Comfort & Safety:** *50 Durometer pads for force reduction and deflection to soften landing.*
- **Energy Absorption:** *resilient pads for shock absorption & deflection.*
- **Specially Profiled Hardwood:** *designed to increase flexibility and resilience for dancer safety.*
**FSC® Materials Available for Purchase*

PARQUET FOR DANCE has been tested per the ANSI E1.26 Standard



Robbins



PERFORMING ARTS™

Robbins Performing Arts
4777 Eastern Avenue
Cincinnati, OH 45226
Phone: 1-800-831-8987 Fax: 1-513-871-8988
info@robbinsdancefloors.com



Robbins, Inc. is a longtime member of the United States Green Building Council (USGBC). Robbins, Inc is also Forest Stewardship Council (FSC®) certified. Look for FSC® certified products available to purchase on most Robbins hardwood flooring systems.

Made in the USA



Robbins hardwood flooring products are proud to be 100% made in the U.S.A. From the lumber we purchase in the U.S., to our manufacturing facilities in Wisconsin and Michigan, consumers can be assured Robbins produces the highest quality *American Made Flooring*.



The mark of
responsible forestry

